

# OWNER'S MANUAL

## Model: LG-55-3PT-BL (5301383)

(55 Gallon 3 Pt Sprayer w/3-Nozzle 'Boomless' Boom Assembly)

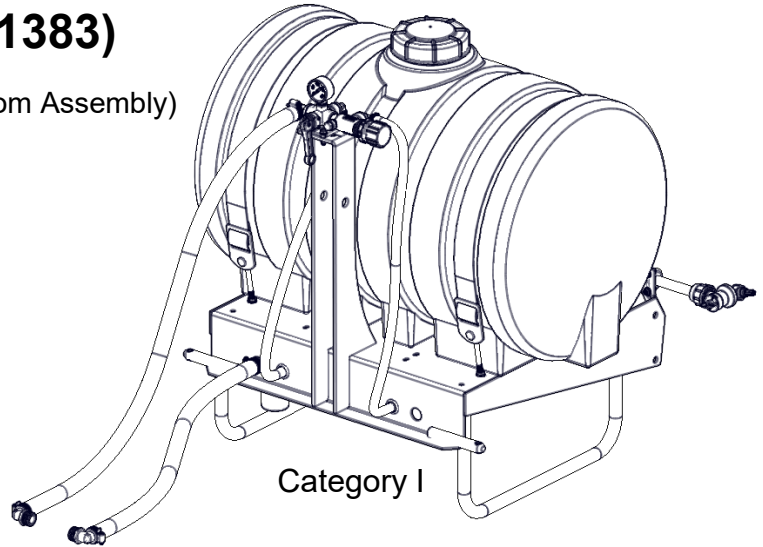
### Technical Specifications

- 55 Gal. Corrosion-Resistant Polyethylene Tank
- 3-Nozzle Boom Assembly, 30' Spray Coverage

### Information About the Sprayer

Roller pumps are positive displacement pumps, which means that the entire solution being pumped must go somewhere or the pump will break. In this roller pumping system, solution is drawn from the tank and forced to a planned source, such as boom nozzles or handgun. The pressure is controlled by a pressure relief valve, which is a spring-loaded device that controls the amount of fluid bypassed (recirculated) to the tank. The gray handle is to be tightened to increase pressure and loosened to decrease pressure.

The 'directo-valve' is the on/off control which allows the operator to manually control the solution going to the boom.



**Caution:** When fully filled with water, this sprayer will weigh approx. 620 lbs.. Consult the owner's manual for your vehicle to verify that you are within it's load carrying capacity.

### Assembly Instructions

Most of the sprayer has been assembled at the factory.

Attach the boom to the boom mounting tabs with the (2) u-bolts and (4) whiz locknuts. Make sure the u-bolts are positioned within the grooves of the grommets on the boom tube.

**NOTE:** The purpose of these grommets is to prevent metal-to-metal contact between the u-bolts, boom tube and boom mounting brackets.

The grommets will 'compress' as you tighten the whiz locknuts onto the u-bolts. Tighten just so that the boom tube will NOT rotate within the grommets. Alternate the tightening of the locknuts to provide even pressure on the grommet.

**\*\*DO NOT OVER TIGHTEN the whiz locknuts, as this may cause the boom tube to flatten slightly!**

Attach the boom feeder hose to the boom after routing it through the underside of the carrier frame as needed. Secure in place with a hose clamp provided.

Poly hose fittings (5010209) are included to be joined to the pump. A torque chain, 'S'-Hook and hardware are also included for the pump. The pump **IS NOT** included with this unit. It is intended for the pump to be mounted directly to the tractor PTO.

BEFORE RETURNING THIS PRODUCT  
FOR ANY REASON, PLEASE CALL  
**1-800-831-0027**

IF YOU SHOULD HAVE A QUESTION OR  
EXPERIENCE A PROBLEM WITH YOUR  
FIMCO INDUSTRIES PRODUCT:

**1-800-831-0027**

BEFORE YOU CALL, PLEASE HAVE THE  
FOLLOWING INFORMATION AVAILABLE:  
SALES RECEIPT & MODEL NUMBER. IN MOST  
CASES, A FIMCO INDUSTRIES EMPLOYEE CAN  
RESOLVE THE PROBLEM OVER THE PHONE.

### General Information

Thank you for purchasing this product. The purpose of this manual is to assist you in operating and maintaining your 3-Point sprayer.



**WARNING:** To reduce the risk of injury, the user must read and understand the operator's manual before using this product.



**WARNING:** Cancer and Reproductive Harm  
[www.P65Warnings.ca.gov](http://www.P65Warnings.ca.gov)

**Retain a copy of your receipt for your unit, as it will be required to validate any warranty service. Products are warranted against manufacturer or workmanship defects for one year from date of purchase for home owner usage and 90 days for commercial usage.**

For technical assistance, visit our website @ [www.fimcoindustries.com](http://www.fimcoindustries.com) or call: **TOLL FREE @ 1-800-831-0027** Our Technical Support Representatives will be happy to help you. To obtain prompt, efficient service, always remember to give the following information...

- Correct Part Description and/or part number
- Model #/Serial # of your sprayer

Part descriptions and numbers can be obtained from the illustrated parts list section(s) of this manual.



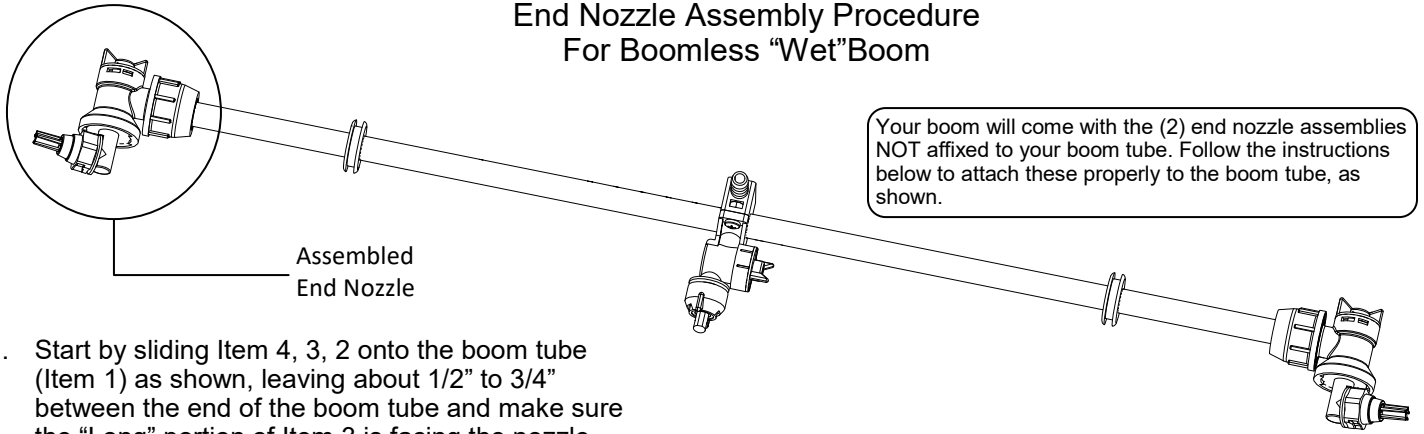
[www.fimcoindustries.com](http://www.fimcoindustries.com)

1000 FIMCO Lane, P.O. Box 1700, North Sioux City, SD 57049  
Toll Free Phone: 800-831-0027 : Toll Free Fax: 800-494-0440

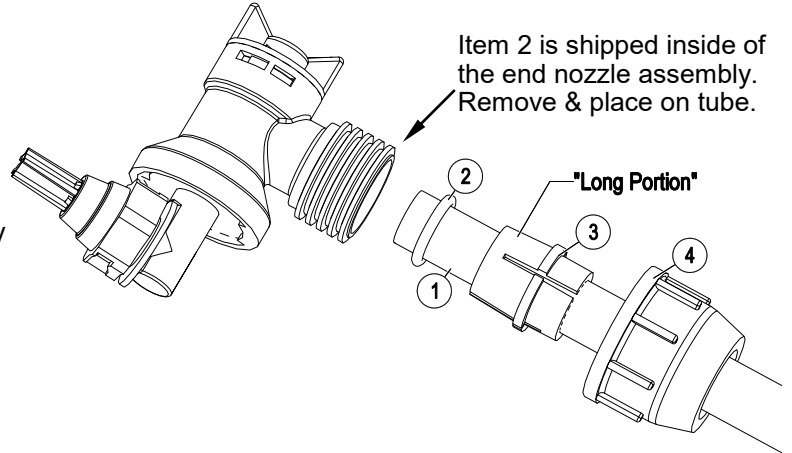
[5004628

(11/18)]

## End Nozzle Assembly Procedure For Boomless "Wet" Boom

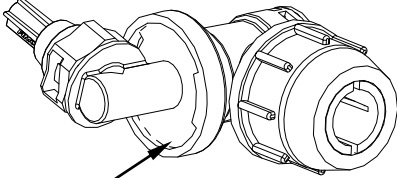


1. Start by sliding Item 4, 3, 2 onto the boom tube (Item 1) as shown, leaving about 1/2" to 3/4" between the end of the boom tube and make sure the "Long" portion of Item 3 is facing the nozzle end.
2. Slide the (complete) end nozzle assembly onto the stainless steel boom tube, with a somewhat "twisting" motion, so that the end face of the boom tube "butts" up against the surface face inside the nozzle body.
3. Now push the "compression olive" (Item 3) against o-ring (Item 2) and slide (both) into the nozzle body opening firmly.
4. Firmly tighten flynut (Item 4) onto threads of nozzle body.
5. Repeat for other side.



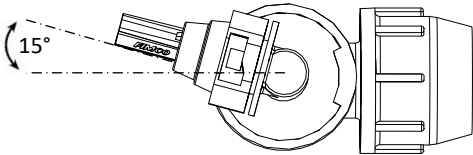
**NOTE:** If water is shooting back on the boom tube, item 2 is not in the correct placement.

**End Nozzle Information**  
(5275122)



This nozzle mounting stem  
Has a ratcheting motion.

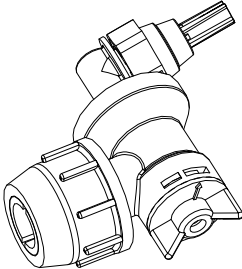
**\*\* Each "click" of the ratcheting motion is approx. 15° \*\***



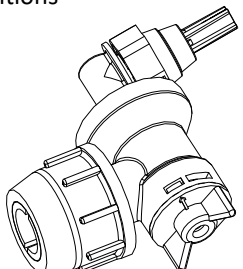
For proper/optimal spray coverage,  
The nozzle must be at a 15° angle

The 15° angle shown will prevent the outer  
Nozzles from overlapping with the center nozzle.

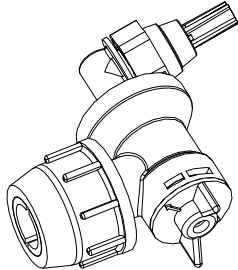
**"On/Off" Valve Positions**



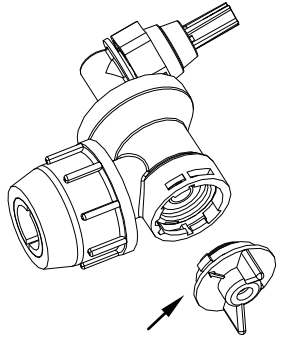
Valve "Open"



Valve "Closed"



Service Position



On/Off Valve Knob  
Eliminate line pressure, then pull out  
to check diaphragm condition.

**Note:** The check valve & diaphragm can fall out during transport, if the knob is not turned to the "ON" or "OFF" position.

**IMPORTANT:** Remove tank lid and be sure the tank is clean and free of any foreign material. Rinse tank out of any tank residue before filling with water to test.

### Testing the Sprayer

Attach the sprayer to the tractor 3 point hitch. Mount the pump to the PTO and affix the torque chain. Open the tank lid and be sure the tank is clean and free of foreign material.

#### NOTE:

It is important that you test your sprayer for leakage and proper spray patters with plain water before chemical application is attempted. This will also give you the opportunity to familiarize yourself with the operation of the sprayer.

Fill the tank about 1/2 full with plain water.

Before starting, open the suction line valve (located underneath the carrier frame), turn the relief valve handle out to lower the line pressure. This will help prime the pump.

**CAUTION:** Always be sure that the water (or solution) has reached the pump before starting your sprayer. If the pump is allowed to run dry, serious damage to the pump will result.

Always have the pressure line open to the tips so that the air which may be trapped in the line will be forced (or purged) out.

Start the tractor PTO. Check the entire system for leaks. Once the pump is primed, the pressure may be increased by turning the handle of the pressure relief valve in. Keep the pressure line open to the tips when setting the pressure. Set the pressure and then lock the relief valve handle in place. Shut off the directo-valve and check for leaks again. Pressure will increase when the pressure line valve is closed and then return to the preset pressure when the valve is opened again.

During the testing period, be sure to observe the spray pattern given by the spray nozzles. If there is any pattern distortion, it will be necessary to remove and clean the affected tips.

**Caution:** Never use a metal object or other sharp item for cleaning a nozzle tip. It is better to use a nozzle brush (NOT wire brush) or compressed air for tip cleaning.

Conditions of weather and terrain must be considered when setting the sprayer. Do not spray on windy days. Protective clothing must be worn in some cases

**Be sure to read the chemical label(s) before application!**

### Operation

The performance of any agricultural chemical depends upon the proper application.

The tips supplied as standard with the sprayer can be used for a wide variety of spraying applications. Other tip sizes are available for different coverages. The speed and pressure charts shown indicate the rates can be changed considerably by changing speed and pressure. The pumping system draws solution from the tank through the strainer/filter and to the pump. The pump forces the solution under pressure to the handgun and/or boom nozzles.

- Activate the handgun by squeezing the handle lever
- Rotating the adjustable nozzle tip on the handgun will change the tip pattern from a straight stream to a cone pattern (fine mist)
- The (3) nozzles are fixed at 17-1/2" spacing
- All (3) nozzles spraying at the same time will allow a maximum coverage of 30 feet
- The center nozzle will spray an 80" swath
- Each of the (3) nozzles has a shutoff valve, so you can shut off each nozzle individually. This may help in achieving the actual coverage needed for your application.

### Calibration

Chemical labels may show application rates in gallons per acre, gallons per 1000 square feet or gallons per 100 square feet. You will note that the tip chart shows 3 of these rating systems. Once you know how much you are going to spray, then determine (from the tip chart) the spraying pressure (PSI), and the spraying speed (MPH). The pressure can be set by running the sprayer with the boom nozzles 'on' and then adjusting the relief valve until the gauge reads the desired pressure. Notice that the pressure will go up when the boom line is shut off. This is normal and the pressure will return as before when you open the boom line. When selecting pressure from the tip chart, it is a good idea to try for the 20 or 30 p.s.i. range as

this allows an excellent nozzle pattern. Spraying at 10 p.s.i. begins to break up the pattern and at 40 p.s.i. you may notice some drift. Determining the proper speed of the pulling vehicle can be done by marking off 100, 200 & 300 feet. The speed chart indicates the number of seconds it takes to travel the distances. Set the throttle and with a running start, travel the distances. Adjust the throttle until you travel the distances in the number of seconds indicated by the speed chart. Once you have reached the throttle setting needed, mark the throttle location so you can stop and go again, returning to the same speed.

Add water and proper amount of chemical to the tank and drive to the starting place for spraying.

| Speed Chart                         |  |          |          |
|-------------------------------------|--|----------|----------|
|                                     | Time Required in seconds to travel a distance of |          |          |
| Speed in M.P.H.<br>(Miles Per Hour) | 100 Ft.  | 200 Ft.  | 300 Ft.  |
| 1.0                                 | 68 sec.  | 136 sec. | 205 sec. |
| 2.0                                 | 34   | 68       | 102      |
| 3.0                                 | 23   | 45       | 68       |
| 4.0                                 | 17   | 34       | 51       |
| 5.0                                 | 14   | 27       | 41       |
| 6.0                                 | 11   | 23       | 34       |
| 7.0                                 | 9.7  | 19       | 29       |
| 8.0                                 | 8.5  | 17       | 26       |
| 9.0                                 | 7.6  | 15       | 23       |
| 10.0                                | 6.8  | 14       | 20       |

| Rate Chart for Boomless Nozzle (Set of 3)                 |                                |       |       |       |       |       |       |       |
|---|--------------------------------|-------|-------|-------|-------|-------|-------|-------|
| Gallons per Acre Based on Water - 17-1/2" Spacing         |                                |       |       |       |       |       |       |       |
| Pressure P.S.I.   | Capacity G.P.M.<br>(3 Nozzles) | 1 MPH | 2 MPH | 3 MPH | 4 MPH | 5 MPH | 6 MPH | 8 MPH |
| 20  | 1.68                           | 28.0  | 14.0  | 9.4   | 7.0   | 5.6   | 4.7   | 3.5   |
| 30  | 2.05                           | 34.4  | 17.2  | 11.4  | 8.6   | 6.9   | 5.7   | 4.3   |
| 40  | 2.40                           | 39.6  | 19.8  | 13.2  | 9.9   | 7.9   | 6.6   | 5.0   |
| Gallons per 1000 Sq. Ft. Based on Water - 17-1/2" Spacing |                                |       |       |       |       |       |       |       |
| Pressure P.S.I.   | Capacity G.P.M.<br>(3 Nozzles) | 1 MPH | 2 MPH | 3 MPH | 4 MPH | 5 MPH | 6 MPH | 8 MPH |
| 20  | 1.68                           | 0.64  | 0.32  | 0.21  | 0.16  | 0.13  | 0.11  | 0.08  |
| 30  | 2.05                           | 0.78  | 0.39  | 0.26  | 0.20  | 0.16  | 0.13  | 0.10  |
| 40  | 2.40                           | 0.90  | 0.45  | 0.30  | 0.23  | 0.18  | 0.15  | 0.12  |
| Gallons per 100 Sq. Ft. Based on Water - 17-1/2" Spacing  |                                |       |       |       |       |       |       |       |
| Pressure P.S.I.   | Capacity G.P.M.<br>(3 Nozzles) | 1 MPH | 2 MPH | 3 MPH | 4 MPH | 5 MPH | 6 MPH | 8 MPH |
| 20  | 1.68                           | 0.064 | 0.032 | 0.021 | 0.016 | 0.013 | 0.011 | 0.008 |
| 30  | 2.05                           | 0.078 | 0.039 | 0.026 | 0.020 | 0.016 | 0.013 | 0.010 |
| 40  | 2.40                           | 0.090 | 0.045 | 0.030 | 0.023 | 0.018 | 0.015 | 0.012 |

\*\* Rate of spray as shown in the chart will remain the same with 1, 2 or 3 Nozzles \*\*

The only difference will be with the width of the spray swath

### Using the Boom Nozzles

Four things must be considered before spraying with the boom.

1. How much chemical must be mixed in the tank.
  2. Rate of spray (gallons per acre to be sprayed).
  3. What pressure (p.s.i.) will be used.
  4. Speed traveled (mph) while spraying.
- \* Refer to the chemical label to determine your chemical mixture
  - \* See the tip chart to determine the pressure to be used. The chart will also show the speed used when spraying.
  - \* Start the pump and open the valve to the boom nozzles.
  - \* Check the spray pattern. Usually you can see the coverage better on a solid concrete surface, such as a driveway.
  - \* The boomless nozzles should be approx. 33" above the objects being sprayed.

## Maintenance During/After Spraying

Periodically close the suction line valve and check the strainer and clean the screen. Always flush the entire plumbing system with water or a neutralizing agent, such as Nutra-Sol after completing the spraying operation.

Proper care and maintenance will prolong the life of your sprayer.

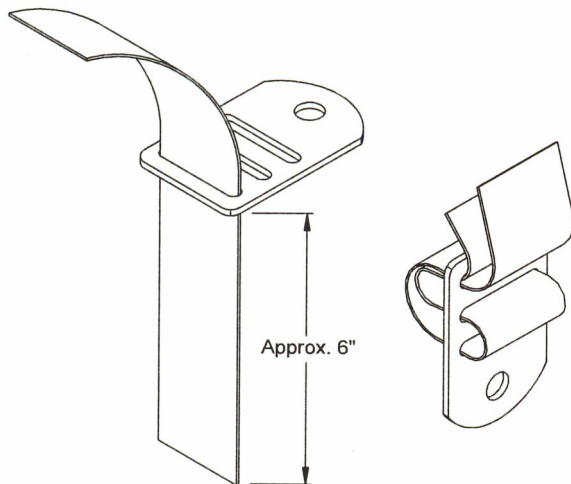
After use, fill the sprayer tank part way with water. Start the sprayer and allow the clear water to be pumped through the plumbing system and out through the spray nozzles.

Refill the tank about half full with plain water and use FIMCO Tank Neutralizer and Cleaner and repeat cleaning instructions above. Flush the entire sprayer with the neutralizing/cleaning agent, then flush out one more time with plain water.

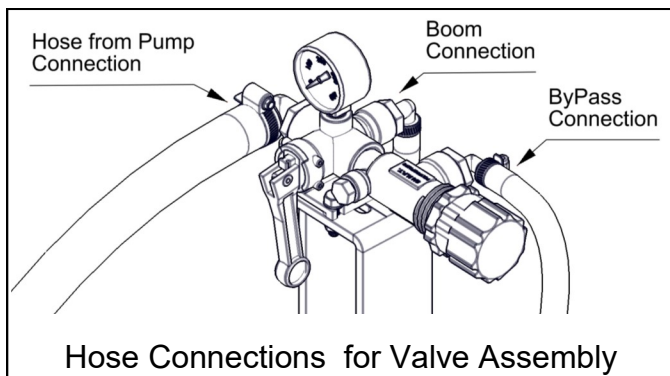
Follow the chemical manufacturer's disposal instructions of all wash or rinsing water. For the boom (if applicable) remove the tips and screens from the nozzle assemblies. Wash these items out thoroughly. Blow the orifice clean and dry. If the orifice remains clogged, clean it with a fine bristle (NOT WIRE) brush or with a toothpick. Do not damage the orifice. Water rinse and dry the tips before storing.

**WARNING:** Some chemicals will damage the pump valves if allowed to soak untreated for a length of time! ALWAYS flush the pump as instructed after each use. DO NOT allow chemicals to sit in the pump for extended times of idleness. Follow the chemical manufacturer's instructions on disposal of all waste water from the sprayer.

## Strap/Buckle Detail Strap Attachment to a "Flat" Buckle



The nylon straps are to be inserted in and out of the slots in the buckle, as shown. Be sure the straps are snug before tightening the hook bolts. In most cases, it will be necessary to re-tighten the straps after filling the tank with liquid.



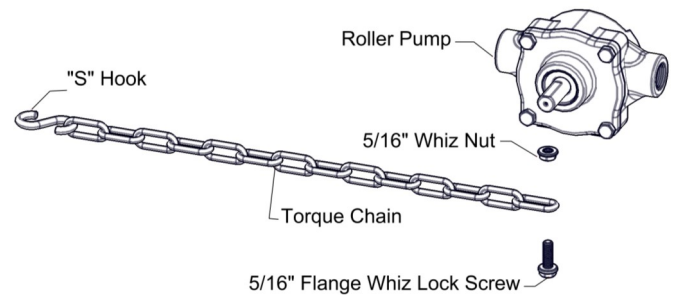
## Winter Storage

Drain all water out of your sprayer, paying special attention to the pump, handgun and valve(s). These items are especially prone to damage from chemicals and freezing weather.

The sprayer should be winterized before storage by pumping a solution of automotive antifreeze (containing a rust inhibitor) through the entire plumbing system. This antifreeze solution should remain in the plumbing system during the winter months. When spring time comes and you are preparing your sprayer for the spray season, rinse the entire plumbing system out, clearing the lines of the antifreeze solution.

Proper care and maintenance will prolong the life of your sprayer.

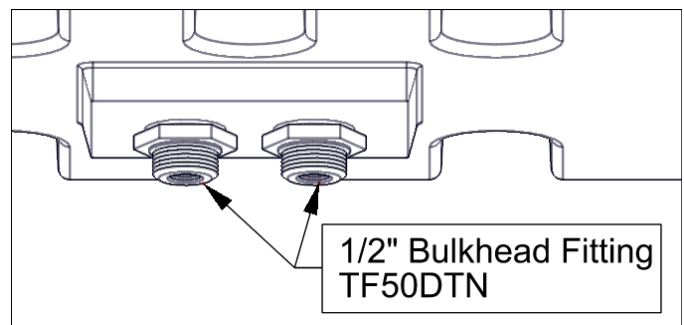
## Torque Chain Attachment to a Roller Pump



A torque chain, 'S' hook, nut and bolt are included in this assembly to secure your pump during operation.

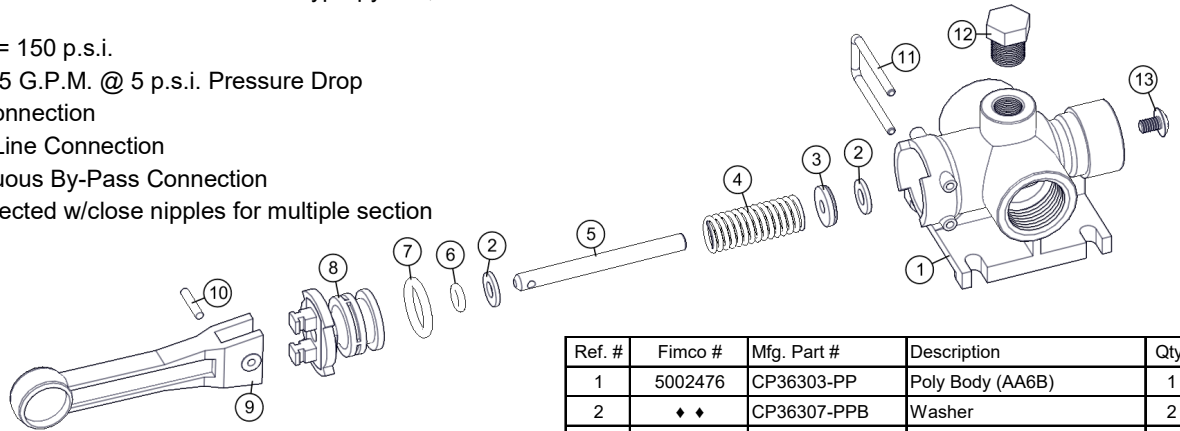
1. Attach one end of the torque chain over the threaded stem of the bolt
2. Thread the whiz nut onto the bolt. Hand-tighten
3. Thread the bolt, chain and nut 'pre-assembly' into the threaded hole on the underside of the pump. Tighten sufficiently
4. Affix the 'S' Hook to your frame (or hitch). Wrap the chain around the frame or hitch and 'S-Hook' it in place. Make sure this connection is very secure! Not having a good, tight connection may result in the pump spinning on your PTO shaft and damaging some components of your sprayer

\*\*\* Insure that this connection point will not allow the roller pump to spin on the PTO shaft \*\*\*

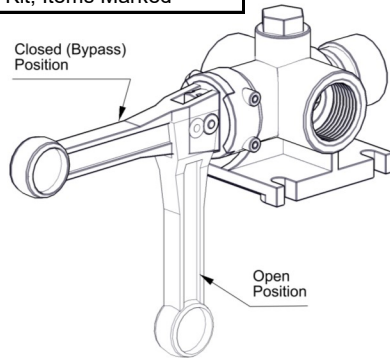


# 'Directo Valve' - Manually Operated Control Valve

- Corrosion Resistant Materials: Wetted Parts Polypropylene, 316SS and Polyethylene
- Maximum Pressure = 150 p.s.i.
- Large Capacity - 12.5 G.P.M. @ 5 p.s.i. Pressure Drop
- 3/4" NPT (F) Inlet Connection
- 1/2" NPT (F) Spray Line Connection
- 3/4" NPT (F) Continuous By-Pass Connection
- Valves may be connected w/close nipples for multiple section spray control



| Fimco # | Mfg. Part # | Description                 |
|---------|-------------|-----------------------------|
| 5143316 | AA6B        | Directo-Valve (AA6B)        |
| 5168718 | PK-AB6B-KIT | Repair Kit, Items Marked ** |



| Ref. # | Fimco # | Mfg. Part #     | Description                                      | Qty. |
|--------|---------|-----------------|--|------|
| 1      | 5002476 | CP36303-PP      | Poly Body (AA6B)                                 | 1    |
| 2      | ♦ ♦     | CP36307-PPB     | Washer   | 2    |
| 3      | **      | CP38726-VI      | Shut-Off Washer, Viton                           | 1    |
| 4      | ♦ ♦     | CP36306-302SS   | Spring   | 1    |
| 5      | ♦ ♦     | CP36304-SS      | Stem   | 1    |
| 6      | **      | CP7717-2/108-VI | O-Ring, Viton                                    | 1    |
| 7      | **      | CP7717-2/209-VI | O-Ring, Viton                                    | 1    |
| 8      | 5086043 | CP36302-PP      | Poly Body Insert (Black)                         | 1    |
| 9      | 5078178 | CP36301-NY      | Handle (Gray)                                    | 1    |
| 10     | 5101220 | CP36308-SS      | Groove Pin                                       | 1    |
| 11     | ♦ ♦     | CP36309-302SS   | Retaining Clip                                   | 1    |
| 12     | 5102022 | F14             | Pipe Plug, 1/4" MNPT                             | 1    |
| 13     | 5117281 | CP38725-SS      | #10-24 x 5/16" Phillips Truss Head Machine Screw | 1    |

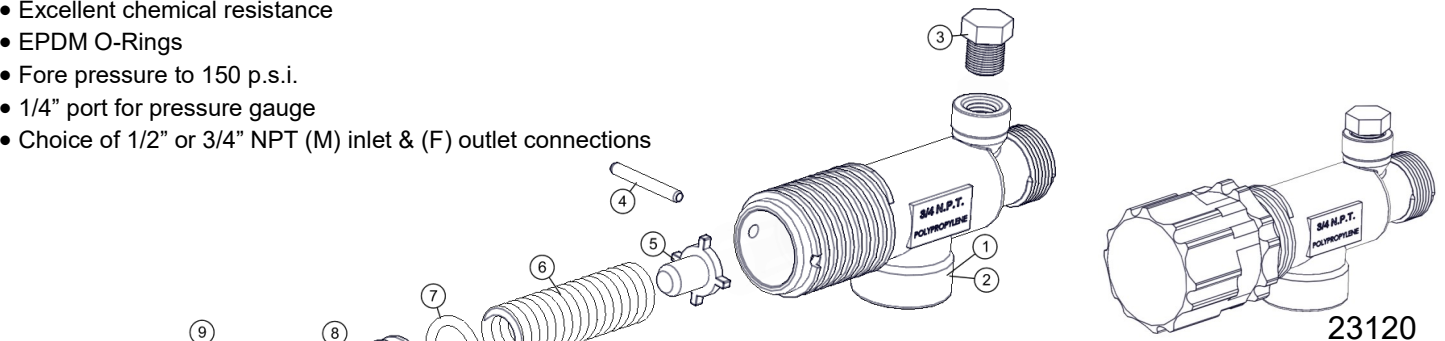
\*\* Available only in Repair Kit

♦ ♦: Only Available in Complete Assembly

## Piston Type Pressure Relief/Regulating Valves

Bypasses excess fluid. Adjustable to maintain control of line pressure at any pressure within the valve operating range. Selected pressure setting firmly held in place by locknut. Extra large passages to handle large flows.

- Polypropylene with stainless steel spring
- Excellent chemical resistance
- EPDM O-Rings
- Fore pressure to 150 p.s.i.
- 1/4" port for pressure gauge
- Choice of 1/2" or 3/4" NPT (M) inlet & (F) outlet connections



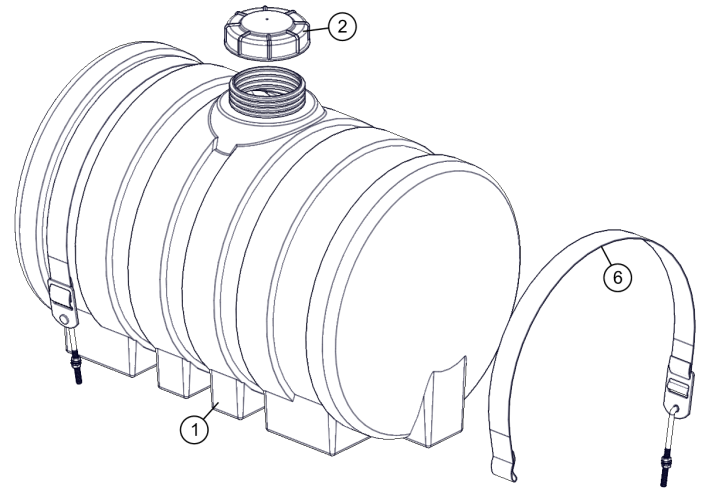
| Fimco # | Mfg. Part #    | Description                      |
|---------|----------------|----------------------------------|
| 5143199 | 23120-3/4-PP   | Pressure Relief Valve (3/4" NPT) |
| 5143200 | 23120-1/2-PP   | Pressure Relief Valve (1/2" NPT) |
| 5168717 | PK-AB23120-KIT | Repair Kit, Items Marked **      |

| Ref. # | Fimco #    | Mfg. Part #   | Description                 |
|--------|------------|---------------|-----------------------------|
| 1      | CP23121-PP | CP23121-PP    | Poly Body (3/4" NPT)        |
| 2      | CP23128-PP | CP23128-PP    | Poly Body (1/2" NPT)        |
| 3      | 5102022    | F14           | Pipe Plug, 1/4" MNPT        |
| 4      | **         | CP23126-302SS | Retaining Pin               |
| 5      | ♦ ♦        | CP23125-PP    | Guide Seat                  |
| 6      | **         | CP23127-302SS | Spring                      |
| 7      | **         | CP7717-15-EPR | O-Ring, EPDM Rubber         |
| 8      | ♦ ♦        | CP23124-PP    | Spring Retainer             |
| 9      | 5110266    | CP23123-PP    | Lock Ring                   |
| 10     | 5046270    | CP23122-NY    | Adjusting Cap, Nylon (Gray) |

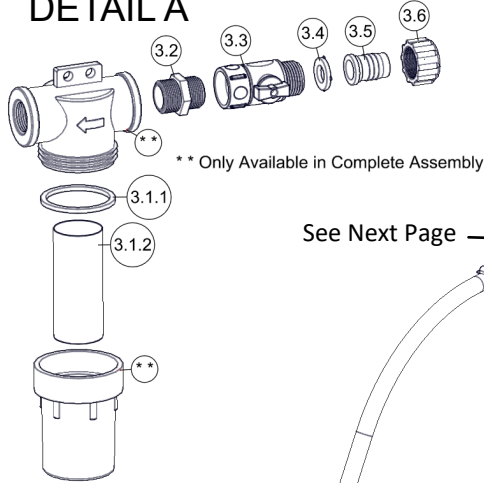
\*\* Available only in Repair Kit

♦ ♦: Only Available in Complete Assembly



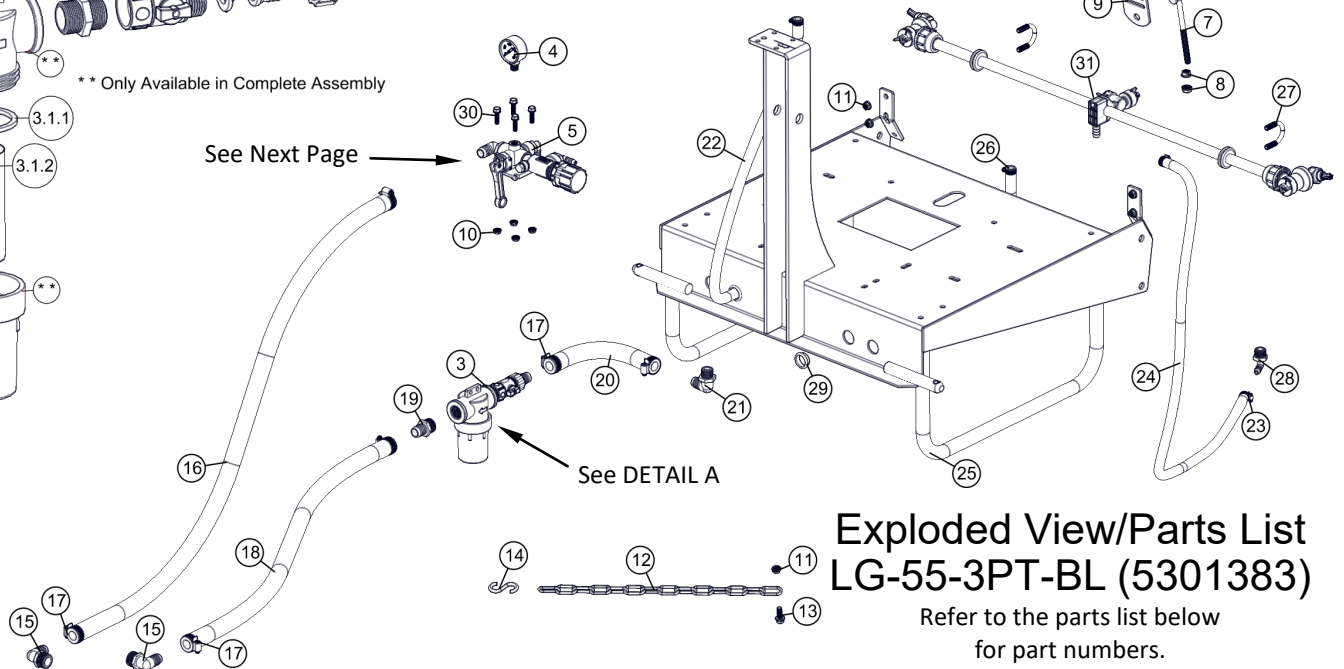


**DETAIL A**



\*\* Only Available in Complete Assembly

See Next Page →



See DETAIL A

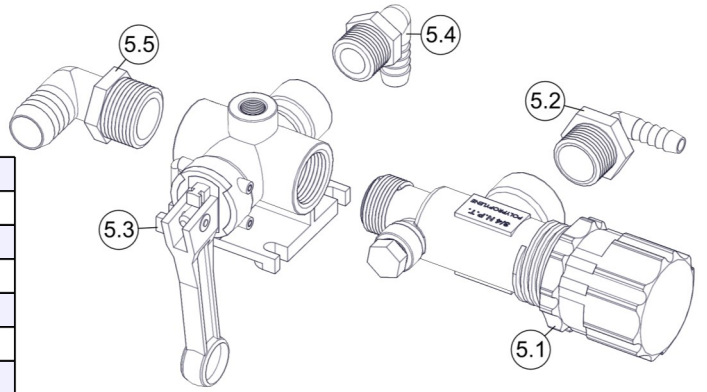
**Exploded View/Parts List  
LG-55-3PT-BL (5301383)**

Refer to the parts list below for part numbers.

| Ref. # | Part #  | Description                                  | Qty |
|--------|---------|--|-----|
| 1      | 5169247 | 55 Gallon Leg Tank, White, (2) 1/2" Fittings | 1   |
| 1.1    | TF50DTN | 1/2" Bulkhead Fitting Assembly               | 2   |
| 2      | 5058189 | 5" Lid (NO Lanyard)                          | 1   |
| 3      | 5274745 | Strainer Sub-Assembly                        | 1   |
| 3.1    | 5116322 | 3/4" Black Poly Strainer                     | 1   |
| 3.1.1  | 5072229 | EPDM Gasket                                  | 1   |
| 3.1.2  | 5116323 | 40 Mesh Screen                               | 1   |
| 3.2    | 5005196 | Poly Adapter, 3/4" MNPT x 3/4" MGHT          | 1   |
| 3.3    | 5143419 | Swivel Shut-Off                              | 1   |
| 3.4    | 5016066 | Garden Hose Washer                           | 1   |
| 3.5    | 5149037 | Poly Swivel, 3/4" Flat Seat Hose Barb        | 1   |
| 3.6    | 5006209 | Poly Knurled Swivel Nut, 3/4" FGHT           | 1   |
| 4      | 5167005 | Gauge, 0-400 p.s.i. (Dry)                    | 1   |
| 5      | 5277757 | Valve Sub-Assembly (55/60-3PT-BL)            | 1   |
| 5.1    | 5143199 | Pressure Relief Valve, (3/4" NPT)            | 1   |
| 5.2    | 5010206 | Poly Elbow, 3/4" MNPT x 3/8" HB              | 1   |
| 5.3    | 5143316 | Directo-Valve (AA6B)                         | 1   |
| 5.4    | 5010203 | Poly Elbow, 1/2" MNPT x 1/2" HB              | 1   |
| 5.5    | 5010209 | Poly Elbow, 3/4" MNPT x 3/4" HB              | 1   |
| 6      | 5133100 | Nylon Strap, 60"                             | 2   |
| 7      | 5034734 | 3/8" x 6" Hook Bolt                          | 4   |
| 8      | 5006259 | 3/8-16nc Hex Flanged Whiz Nut Gr. 5          | 8   |
| 9      | 5108042 | Tank Strap Buckle, Straight                  | 4   |

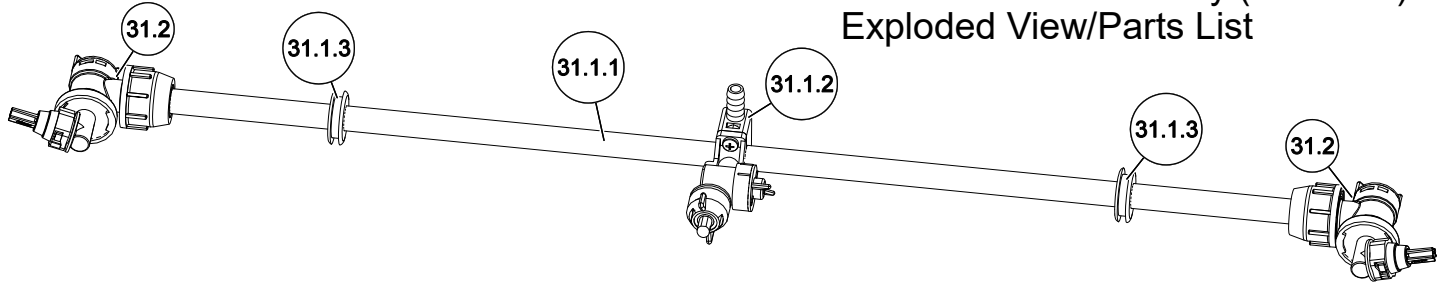
| Ref. # | Part #  | Description                               | Qty |
|--------|---------|---|-----|
| 10     | 5006306 | 1/4-20nc Hex Flanged Whiz Nut Gr. 5.      | 4   |
| 11     | 5006307 | 5/16-18nc Hex Flanged Whiz Nut Gr. 5      | 5   |
| 12     | 5049017 | Torque Chain, 24"                         | 1   |
| 13     | 5117300 | H.H.C.S. Flanged 5/16"-18nc x 1" Long     | 1   |
| 14     | 5082006 | "S" Hook                                  | 1   |
| 15     | 5010209 | Poly Elbow, 3/4" MNPT x 3/4" HB           | 2   |
| 16     | 5020227 | Hose, 3/4"-1 Brd. x 48"                   | 1   |
| 17     | 5051024 | Hose Clamp, 3/4"                          | 6   |
| 18     | 5020105 | Hose, 3/4"-2 Brd. x 36"                   | 1   |
| 19     | 5067127 | Poly Fitting, 3/4" MNPT x 3/4" HB         | 1   |
| 20     | 5020387 | Hose, 3/4"-2 Brd. x 10"                   | 1   |
| 21     | 5010205 | Poly Elbow, 1/2" MNPT x 3/4" HB           | 1   |
| 22     | 5020123 | Hose, 1/2"-1 Brd. x 60"                   | 1   |
| 23     | 5051144 | Hose Clamp, 3/8"                          | 2   |
| 24     | 5020538 | Hose, 3/8"-1 Brd. x 43"                   | 1   |
| 25     | 5273023 | LG-55 3-Point Weldment (Red)              | 1   |
| 26     | 5051114 | Hose Clamp, 1/2"                          | 2   |
| 27     | 5034220 | Round U-Bolt, 5/16"-18 x 1 5/16" x 1 3/4" | 2   |
| 28     | 5010202 | Poly Elbow, 1/2" MNPT x 3/8" HB           | 1   |
| 29     | 5041105 | Snap Bushing                              | 2   |
| 30     | 5117301 | H.H.C.S. Flanged 1/4"-20nc x 1" Long      | 4   |
| 31     | 5275260 | "Wet Boom" Assembly                       | 1   |

## Valve Sub-Assembly 5277757



| Ref. # | Part #  | Description                       | Qty |
|--------|---------|-----------------------------------|-----|
| 5      | 5277757 | Valve Sub-Assembly (55/60-3PT-BL) | 1   |
| 5.1    | 5143199 | Pressure Relief Valve, (3/4" NPT) | 1   |
| 5.2    | 5010206 | Poly Elbow, 3/4" MNPT x 3/8" HB   | 1   |
| 5.3    | 5143316 | Directo-Valve (AA6B)              | 1   |
| 5.4    | 5010203 | Poly Elbow, 1/2" MNPT x 1/2" HB   | 1   |
| 5.5    | 5010209 | Poly Elbow, 3/4" MNPT x 3/4" HB   | 1   |

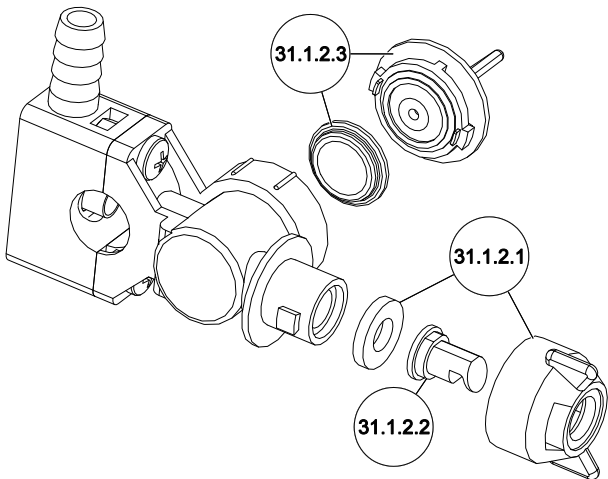
## Boomless "Wet" Boom Assembly (5275260) Exploded View/Parts List



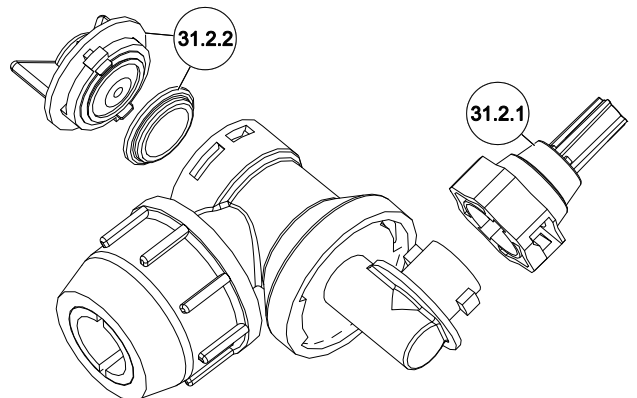
| Ref. #   | Part #  | Description                         | Qty |
|----------|---------|-------------------------------------|-----|
| 31       | 5275260 | "Wet Boom" Assembly                 | 1   |
| 31.1     | 5275712 | Wet Boom Sub-Assembly               | 1   |
| 31.1.1   | 5100316 | Boom Tube                           | 1   |
| 31.1.2   | 5275123 | Center Nozzle Assembly (Wet Boom)   | 1   |
| 31.1.2.1 | 5274862 | Center Boomless Nozzle Cap w/Gasket | 1   |
| 31.1.2.2 | 5018329 | Center Spray Tip                    | 1   |
| 31.1.2.3 | 5088024 | Valve (On/Off) Knob w/Diaphragm     | 1   |

| Ref. #     | Part #  | Description                     | Qty |
|------------|---------|---------------------------------|-----|
| 31.1.2.3.1 | 5063255 | Diaphragm                       | 1   |
| 31.1.3     | 5075016 | Rubber Grommet                  | 2   |
| 31.2       | 5275122 | End Nozzle Assembly (Wet Boom)  | 2   |
| 31.2.1     | 5274861 | XT Spray Nozzle, Cap, & O-Ring  | 1   |
| 31.2.2     | 5088024 | Valve (On/Off) Knob w/Diaphragm | 1   |
| 31.2.2.1   | 5063255 | Diaphragm                       | 1   |

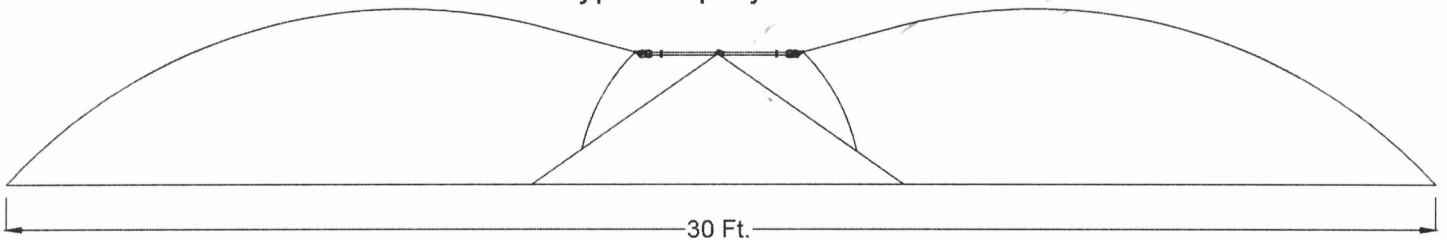
### Center Nozzle Assembly 5275123



### End Nozzle Assembly 5275122



### Typical Spray Pattern



# Warranty

## LIMITED WARRANTY FOR NEW FIMCO, IND. EQUIPMENT

**WHO MAY USE THIS LIMITED WARRANTY.** This limited warranty (the "Limited Warranty") is provided by Fimco, Ind. to the original purchaser ("you") of the Equipment (as defined below) from Fimco, Ind. or one of Fimco, Ind.'s authorized dealers. This Limited Warranty does not apply to any subsequent owner or other transferee of the Equipment. THIS LIMITED WARRANTY GIVES YOU SPECIFIC LEGAL RIGHTS, AND YOU MAY ALSO HAVE OTHER RIGHTS WHICH VARY FROM STATE TO STATE.

**WHAT THIS LIMITED WARRANTY COVERS AND FOR HOW LONG.** Fimco, Ind. warrants that any new Equipment will be free from defects in material and workmanship for a period of **one (1) year** (homeowner), **90 days** (commercial user), after delivery of the Equipment to you (the "Warranty Period"). The Warranty Period is not extended if Fimco, Ind. repairs or replaces the Equipment.

**WHAT IS NOT COVERED BY THIS LIMITED WARRANTY.** This Limited Warranty does not apply to: (1) used Equipment; (2) any Equipment that has been altered, changed, repaired or treated since its delivery to you, other than by Fimco, Ind. or its authorized dealers; (3) damage or depreciation due to normal wear and tear; (4) defects or damage due to failure to follow Fimco, Ind.'s operator's manual, specifications or other written instructions, or improper storage, operation, maintenance, application or installation of parts; (5) defects or damage due to misuse, accident or neglect, "acts of God" or other events beyond Fimco, Ind.'s reasonable control; (6) accessories, attachments, tools or parts that were not manufactured by Fimco, Ind., whether or not sold or operated with the Equipment; or (7) rubber parts, such as tires, hoses and grommets.

**HOW TO OBTAIN WARRANTY SERVICE.** To obtain warranty service under this Limited Warranty, you must (1) provide written notice to Fimco, Ind. of the defect during the Warranty Period and within **thirty (30)** days after the defect becomes apparent or the repair becomes necessary, at the following address: Fimco, Ind., 1000 Fimco Lane, North Sioux City, SD 57049; and (2) make the Equipment available to Fimco, Ind. or an authorized dealer within a reasonable period of time. For more information about this Limited Warranty, please call: **800-831-0027**.

**WHAT REMEDIES ARE AVAILABLE UNDER THIS LIMITED WARRANTY.** If the conditions set forth above are fulfilled and the Equipment or any part thereof is found to be defective, Fimco, Ind. shall, at its own cost, and at its option, either repair or replace the defective Equipment or part. Fimco, Ind. will pay for shipping and handling fees to return the repaired or replacement Equipment or part to you.

**LIMITATION OF IMPLIED WARRANTIES AND OTHER REMEDIES.** THE REMEDIES DESCRIBED ABOVE ARE YOUR SOLE AND EXCLUSIVE REMEDIES, AND FIMCO, IND.'S SOLE LIABILITY, FOR ANY BREACH OF THIS LIMITED WARRANTY. TO THE EXTENT APPLICABLE, ANY IMPLIED WARRANTIES, INCLUDING, WITHOUT LIMITATION, THE IMPLIED WARRANTIES OF MERCHANTABILITY AND FITNESS FOR A PARTICULAR PURPOSE, SHALL BE LIMITED IN DURATION TO THE WARRANTY PERIOD, AND THE REMEDIES AVAILABLE FOR BREACH THEREOF SHALL BE LIMITED TO THE REMEDIES AVAILABLE UNDER THIS EXPRESS LIMITED WARRANTY. SOME STATES DO NOT ALLOW LIMITATIONS ON HOW LONG AN IMPLIED WARRANTY LASTS, SO THE ABOVE LIMITATION MAY NOT APPLY TO YOU. IN NO EVENT SHALL FIMCO, IND.'S LIABILITY UNDER THIS LIMITED WARRANTY EXCEED THE ACTUAL AMOUNT PAID BY YOU FOR THE DEFECTIVE EQUIPMENT, NOR SHALL FIMCO, IND. BE LIABLE, UNDER ANY CIRCUMSTANCES, FOR ANY CONSEQUENTIAL, INCIDENTAL, SPECIAL OR PUNITIVE DAMAGES OR LOSSES, WHETHER DIRECT OR INDIRECT. SOME STATES DO NOT ALLOW THE EXCLUSION OR LIMITATION OF INCIDENTAL OR CONSEQUENTIAL DAMAGES, SO THE ABOVE LIMITATION OR EXCLUSION MAY NOT APPLY TO YOU.