

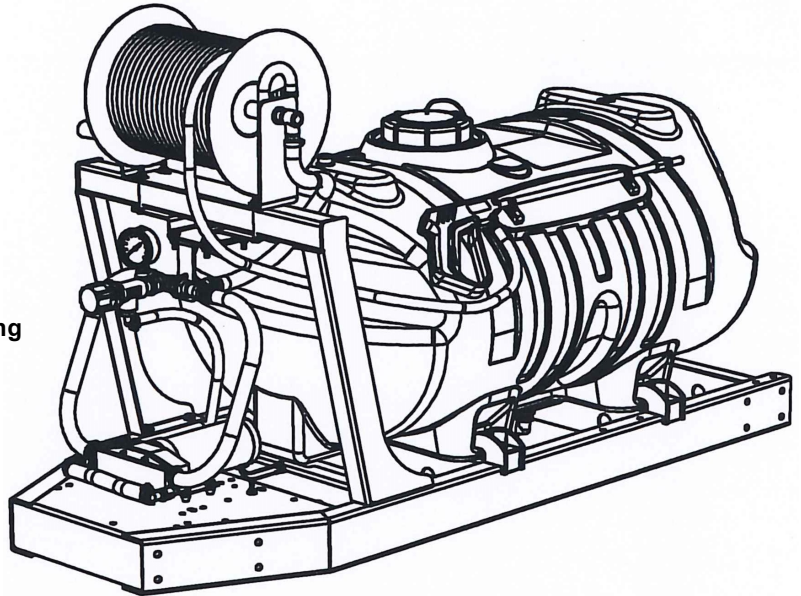
OWNER'S MANUAL

Model: TSSK-60
(5301161)
(12 Volt, 60 Gallon
Skid Mounted Tree Sprayer)

Caution: When fully filled with water, this sprayer will weigh approx. 745 lbs.. Consult the owner's manual for your vehicle to verify that you are within it's load carrying capacity.

Technical Specifications

- 60 Gallon Corrosion-Resistant Polyethylene tank
- 12 Volt Plunger Pump
- Pistol Grip Handgun W/25' of Hose
- Adjustable Pressure Range
- Suction Line Filter/Strainer



BEFORE RETURNING THIS PRODUCT
FOR ANY REASON, PLEASE CALL
1-800-831-0027

IF YOU SHOULD HAVE A QUESTION OR
EXPERIENCE A PROBLEM WITH YOUR
FIMCO INDUSTRIES PRODUCT:
1-800-831-0027

BEFORE YOU CALL, PLEASE HAVE THE
FOLLOWING INFORMATION AVAILABLE:
SALES RECEIPT & MODEL NUMBER. IN MOST
CASES, A FIMCO INDUSTRIES EMPLOYEE CAN
RESOLVE THE PROBLEM OVER THE PHONE.

Assembly Instructions

The sprayer comes mostly assembled from the factory. The hose reel needs to be attached to the reel mount by using (4) screws and nuts. Feed the screws through the base of the hose reel, across the square tube of the reel mount and into the backing plate (See exploded view drawing).

The hoses coming off the hose reel need to be connected to the handgun and to the manifold.

Using a good grade thread sealant, thread the pressure gauge into place.

Referring to the wiring diagram, connect the battery wire assembly to the pump. Hook up the wiring to an existing 12-volt power source.

****IMPORTANT REMINDER****

This sprayer comes with an On/Off valve located on your intake line. You must make sure the valve is in the "open" position before using your sprayer.



WARNING: Cancer and Reproductive Harm
www.P65Warnings.ca.gov



WARNING: To reduce the risk of injury, the user must read and understand the operator's manual before using this product.

General Information

Thank you for purchasing this product. The purpose of this manual is to assist you in operating and maintaining your skid sprayer.

Retain a copy of your receipt for your unit, as it will be required to validate any warranty service. Products are warranted against manufacturer or workmanship defects for one year from date of purchase for home owner usage and 90 days for commercial usage.

For technical assistance, visit our website @ www.fimcoindustries.com or call: **TOLL FREE @ 1-800-831-0027** Our Technical Support Representatives will be happy to help you. To obtain prompt, efficient service, always remember to give the following information...

- Correct Part Description and/or part number
- Model #/Serial # of your sprayer

Part descriptions and numbers can be obtained from the illustrated parts list section(s) of this manual.



www.fimcoindustries.com

1000 FIMCO Lane, P.O. Box 1700, North Sioux City, SD 57049
Toll Free Phone: 800-831-0027 : Toll Free Fax: 800-494-0440
[5004551 (01/19)]

IMPORTANT: Remove tank lid and be sure the tank is clean and free of any foreign material. Rinse tank out of any tank residue before filling with water to test.

Testing the Sprayer

NOTE:

It is VERY important for you to test your sprayer with plain water before actual spraying is attempted. This will enable you to check the sprayer for leaks without the possibility of losing any expensive chemicals.

Fill the tank about 1/2 full with plain water and drive to the starting place for spraying.

When you are ready to spray, open the valve on your intake line and allow water to flow to the pump and turn on the pump. This will start solution spraying from the spray gun when trigger is pulled. The pressure will decrease slightly when spraying. Adjust the pressure by opening and closing the valve knob on the pressure relief valve. Make sure your pattern is sufficient. You may down-pressure the system by 'bypassing' solution back into the tank. This is achieved by opening the bypass valve. Regulating pressure is done in this manner. Turning the handle IN will increase pressure and turning the handle OUT will decrease pressure.

When everything tests all right (no leaks and good pressure), add the desired chemicals to the mixture and water combination and start your spraying operation. Adjust the pressure and spray as you did in the testing procedure.

Conditions of weather and terrain must be considered when setting the sprayer. Do not spray on windy days. Protective clothing must be worn in some cases.

Be sure to read the chemical label(s) before application!

Operation

The pumping system draws solution from the tank, through the strainer and to the pump. The pump forces the solution under pressure to the handgun.

Connect the lead wire to a fully charged 12 volt battery. You may use either a stand-alone battery or the battery on your towing vehicle. Connect to the positive (red) terminal first, then connect to the negative (black) terminal. Then connect the end of the lead wire to the end of the pump. When disconnecting, disconnect the end of the pump wire from the lead wire, then disconnect the negative (black) connection and finally the positive (red) connection. The lead wire has an On/Off switch to activate the pump. "-" is on and "O" is off.

Fill the tank part way with water and then add the desired amount of chemical to be sprayed. Finish filling tank to proper level. Turn the pump on with the toggle switch.

When spraying with the handgun, pressure may be reduced by slowly opening the bypass valve until desired pressure is achieved. Opening the valve decreases pressure, closing the valve increases pressure.

Maintenance During/After Spraying

Periodically check the strainer and clean the screen on your intake line. The strainer is located near the suction line shut-off valve. Closing this valve will allow you to remove the strainer/screen and clean it.

The tank may be drained by removing the valve from the swivel fitting and screen. Opening the valve will allow the solution to run out. The solution may be drained into a convenient container.

Proper care and maintenance will prolong the life of your sprayer.

After use, drain the tank and store or dispose of chemical properly. Fill the sprayer half way with clean water. Start the pump and allow the water to pump through the entire plumbing system and nozzle. Drain and then refill half full, add the recommended amount of a good quality tank cleaner, such as FIMCO Tank Neutralizer and Cleaner. (If no tank cleaner is available, you may substitute dish soap for this step, about 1-2 oz. per gallon). Turn pump on and circulate through system for 15 minutes and then spray out through handgun nozzle. Refill sprayer half way with clean water and repeat. Follow the chemical manufacturer's disposal instructions of all wash or rinsing water.

If handgun nozzle needs cleaning, remove from the sprayer and soak in warm soapy water. Clean with a soft bristled brush or toothpick if necessary. Never use a metal object. Even the slightest damage can change the flow rate and spray distribution. Water rinse and dry the tip before storing.

WARNING: Some chemicals will damage the pump valves if allowed to soak untreated for a length of time! ALWAYS flush the pump as instructed after each use. DO NOT allow chemicals to sit in the pump for extended times of idleness. Follow the chemical manufacturer's instructions on disposal of all waste water from the sprayer.

Winter Storage

Prepare the sprayer for end-of-season storage by running RV antifreeze through the system. This will keep internal parts lubricated, protect against corrosion and keep the unit from freezing. *Note: RV antifreeze is non-toxic and biodegradable and generally safer for the environment than automotive antifreeze.*

Before storing your sprayer for winter or long term storage, thoroughly clean and drain it as much as possible. Then pour enough pink RV antifreeze into the tank so that when the pump is turned on you can pump the antifreeze throughout the entire plumbing system, including the pressure adjust (bypass) line. Make sure to operate the handgun until you see pink fluid spraying from the nozzles. Leave any remaining antifreeze in the tank. Before your next usage, rinse the antifreeze from the sprayer with clean water.

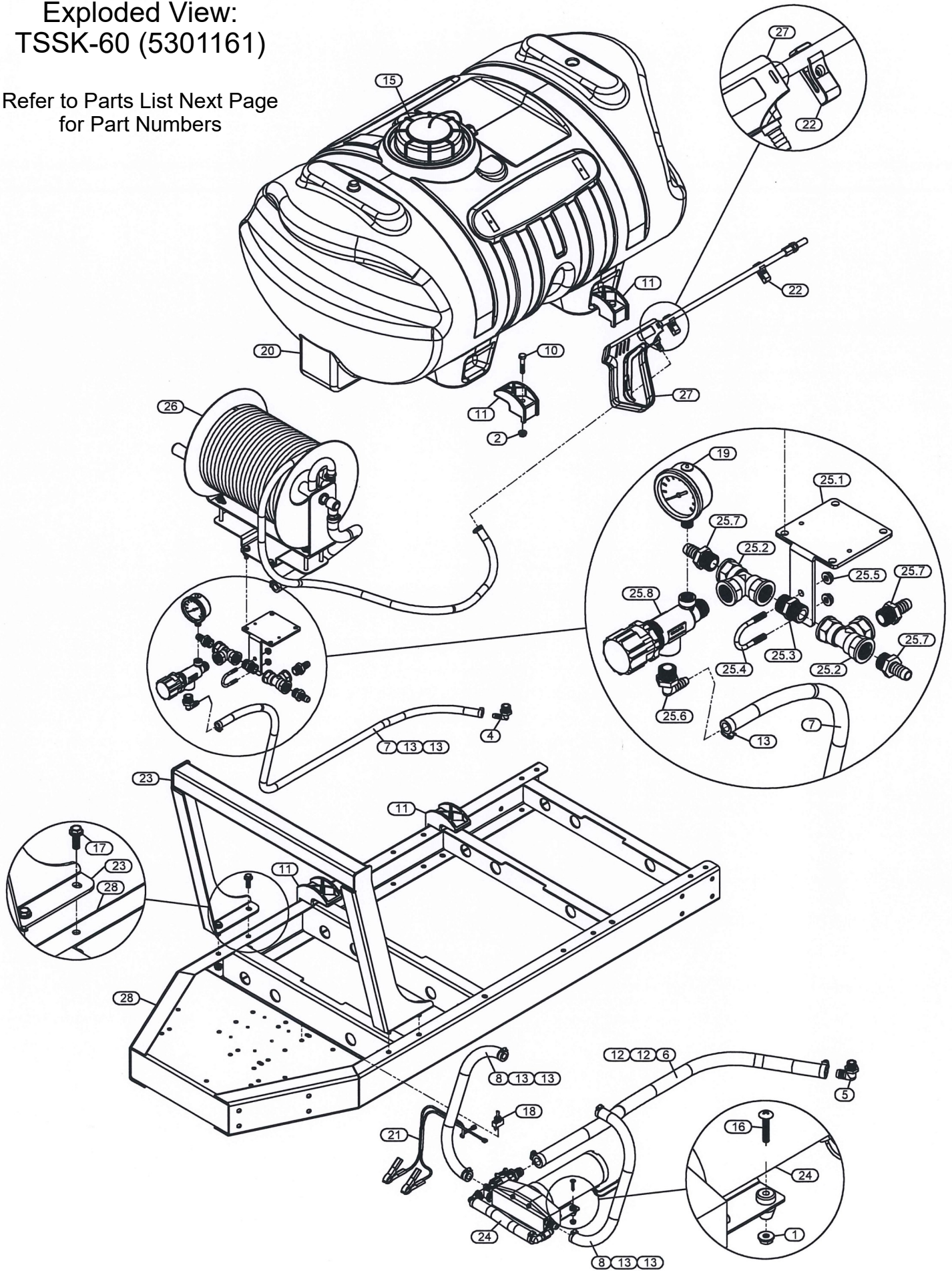
It is nearly impossible to drain all of the water from the sprayer and any trapped water can freeze in cold weather and damage parts of the sprayer.

Pumping the antifreeze through the system will displace the water and help prevent this damage.

Removing from storage: drain the antifreeze. Fill the tank with fresh water and run through the system. Dispose of antifreeze and flush water properly.

Exploded View: TSSK-60 (5301161)

Refer to Parts List Next Page
for Part Numbers



Parts List: TSSK-60 (5301161)

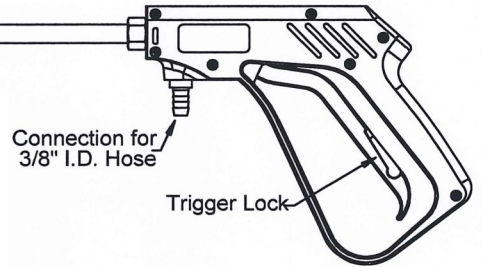
Ref. #	Part #	Description	Qty.
1	5006186	#10-24 Serrated Flng Hex Nut	4
2	5006259	3/8"-16nc Hex Flanged Whiz Nut, Grade 5	8
3	5006307	5/16"-18nc Hex Flanged Whiz Nut, Grade 5	4
4	5010202	Poly Elbow, 1/2" MPT x 3/8" HB	1
5	5010205	Poly Elbow, 1/2" MNPT x 3/4" HB	1
6	5020105	Hose, 3/4"-2 Brd. X 36"	1
7	5020161	Hose, 3/8"-1 Brd. x 48"	1
8	5020299	Hose, 1/2"-2 Brd. x 20"	2
9	5034644	5/16"-18 x 3" Flng Hex Bolt	4
10	5034101	3/8"-16 x 1-3/4" Hex Bolt	4
11	5038698	Plastic Tank Hold-Down Leg Clip	4
12	5051024	Hose Clamp, 3/4"	2
13	5051114	Hose Clamp, 1/2"	6
14	5051144	Hose Clamp, 3/8"	2
15	5058188	Tank Lid w/Lanyard	1
16	5117168	#10-24 x 1" Phillips Truss Head Machine Screw	4
17	5117307	H.H.C.S. Flanged 3/8"-16nc x 1"	4
18	5157016	Mini Toggle Switch, Model 1700 Series	1
19	5167080	Pressure Gauge, 0-200 PSI (Liquid Filled)	1

Ref. #	Part #	Description	Qty.
20	5169249	60 Gallon Elliptical Tank (White)	1
20.1	TF50DTN	1/2" Heavy Duty Double Threaded Bulkhead Fitting	1
21	5274511	Battery Wire Assembly, 20'	1
22	5278348	Deluxe Handgun Clips & Screws	1
23	5274901	Hose Reel Mount Weldment	1
24	5275074	Pump Assembly	1
25	5275075	Relief Valve & Manifold Assembly	1
25.1	5017929	Backing/Mounting Plate	1
25.2	5010230	Poly Tee, 1/2" FPT	2
25.3	5011139	Poly Close Nipple, 3/4" MPT	1
25.4	5034197	Round U-Bolt, 1/4"-20 x 1" x 1-3/4"	1
25.5	5006306	1/4"-20nc Hex Flanged Whiz Nut, Grade 5	2
25.6	5010202	Poly Elbow, 1/2" MPT x 3/8" HB	1
25.7	5067131	Poly Fitting, 1/2" MPT x 1/2" HB	3
25.8	5143200	Pressure Relief Valve (1/2" NPT)	1
26	5275076	Hose Reel Assembly	1
27	5275078	Handgun Assembly	1
28	5278082	60 Gallon Skid Weldment (Red)	1



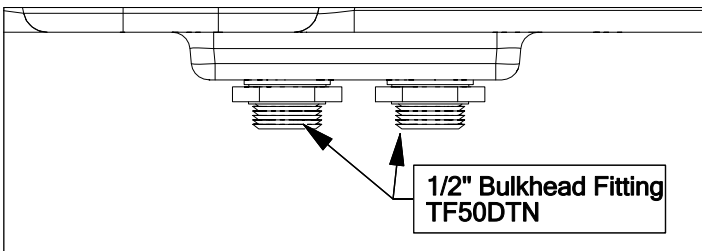
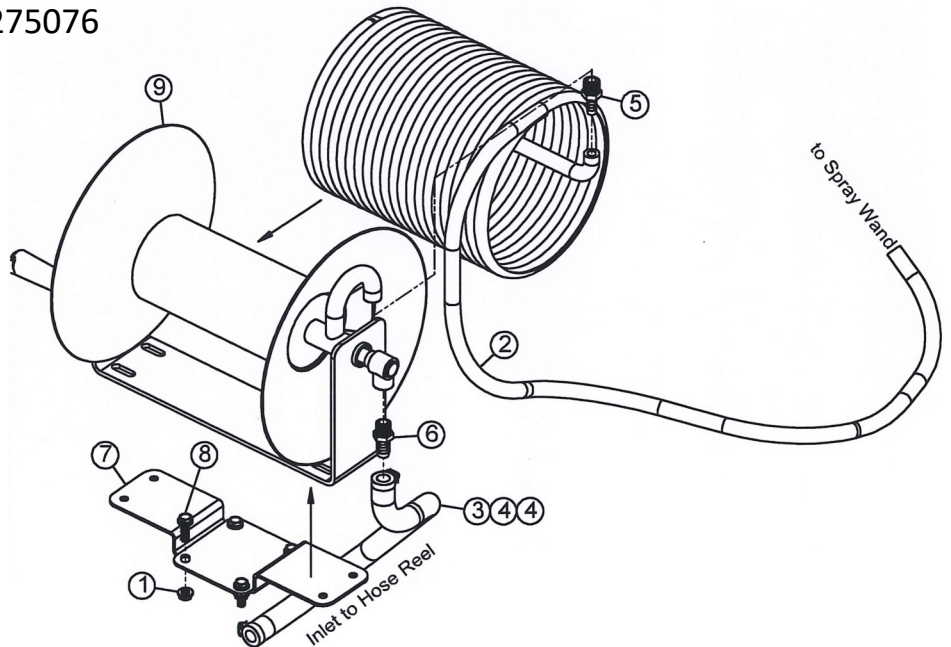
Handgun Assembly: 5275078

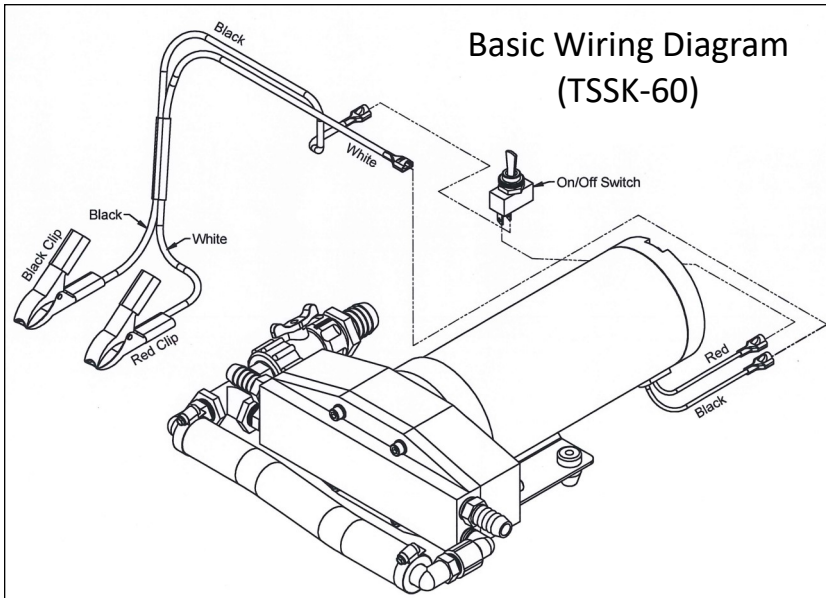
Ref. #	Part #	Mfg. Part #	Description	Qty.
1	5002303	CP1321-AL	TeeJet Body, 1/4" NPT	1
2	5046033	CP1325-AL	Cap, Aluminum	1
3	5072105	CP4743-NY	Gasket, Nylon	1
4	5138679	DX-HSS6	Orifice Tip (H.S.S.)	1
5	5274514	5274514	Handgun (5273959) Less Adjustable Nozzle	1



Hose Reel Assembly: 5275076

Ref. #	Part #	Description	Qty.
1	5006307	5/16"-18nc Hex Flanged Whiz Locknut	4
2	5020099	Hose, 3/8"-2 Brd. x 25'	1
3	5020291	Hose, 1/2"-2 Brd. x 30"	1
4	5051114	Hose Clamp, 1/2"	2
5	5067135	Poly Fitting, 3/8" MPT x 3/8" HB	1
6	5067136	Poly Fitting, 3/8" MPT x 1/2" HB	1
7	5095237	Hose Reel Mount	1
8	5117300	H.H.C.S. Flanged 5/16"-18nc x 1"	4
9	5277183	Hose Reel	1

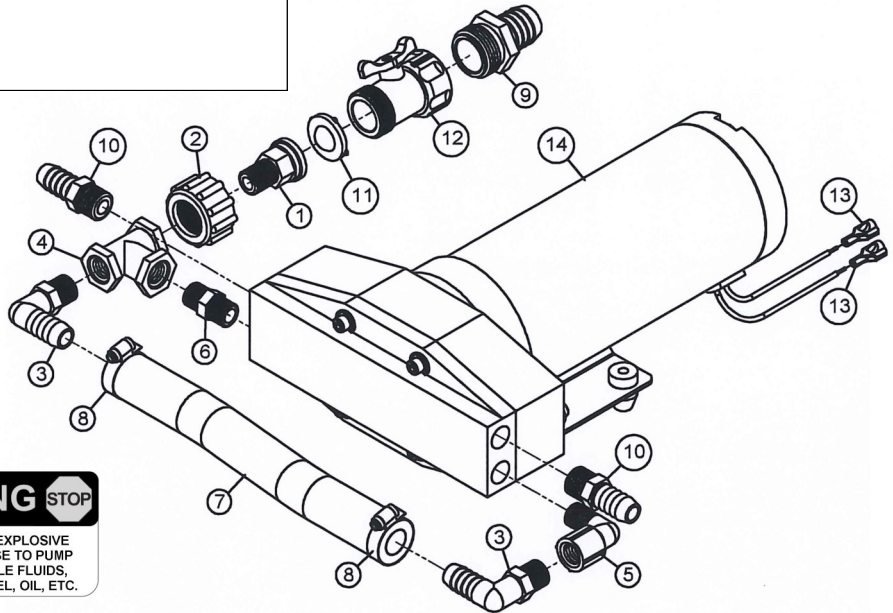




Pump Assembly: 5275074

Ref. #	Part #	Description	Qty.
1	5005242	Nylon Swivel Fitting, 1/4" MPT	1
2	5006209	Poly Knurled Nut, 3/4" FGHT	1
3	5010197	Poly Elbow, 1/4" MPT x 1/2" HB	2
4	5010229	Poly Tee, 1/4" FPT	1
5	5010242	Poly Street Elbow, 1/4" NPT	1
6	5011181	Brass Hex Nipple, 1/4"	1
7	5020193	Hose, 1/2"-2 Brd. x 9"	1
8	5051114	Hose Clamp, 1/2"	2
9	5067123	Poly Fitting, 3/4" MGHT x 3/4" HB	1
10	5067139	Poly Fitting, 1/4" MPT x 1/2" HB	2
11	5116242	Strainer, 1" Filter Washer	1
12	5143419	Swivel Shut Off Valve	1
13	5157065	1/4" Female Push-On Terminal (10-12 Ga.)	2
14	5274512	PUPTEC Plunger Pump (12V)	1

- Max. Pressure: 100 PSI
- Open Flow: 2.7 GPM
- Seals: Teflon
- O-Rings: Viton®
- Plunger 304 SS
- Inlet Ports: (2) 1/4" FNPT
- Max. Fluid Temp.: 140° (F)
- Voltage: 12 VDC
- Max. Amps: 20
- Body: Hardcoat Aluminum



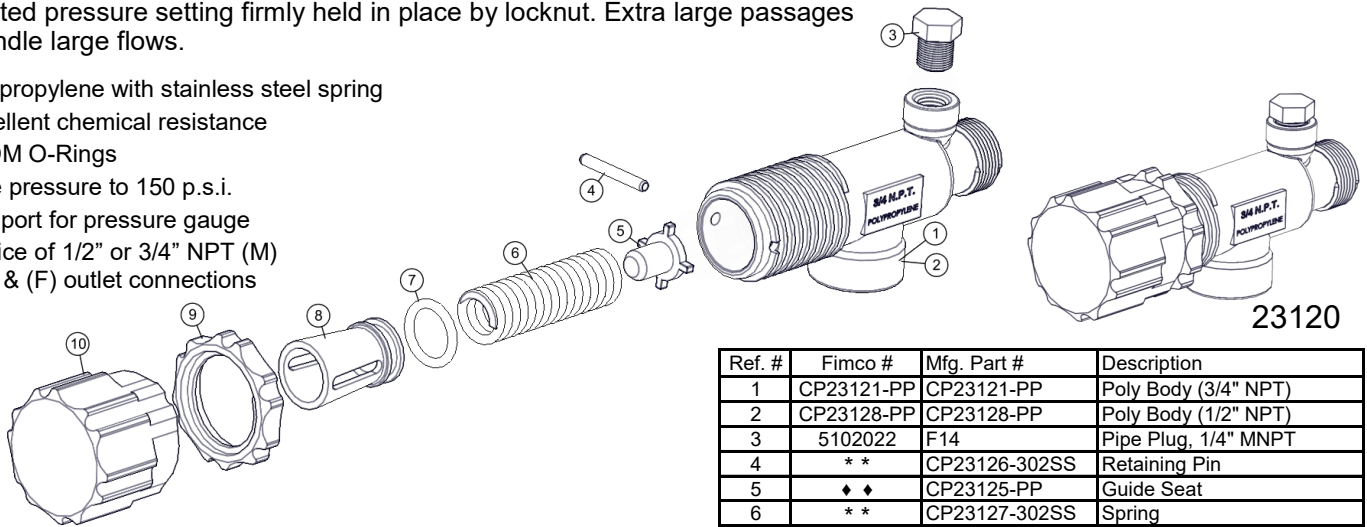
STOP WARNING STOP

DO NOT USE PUMP IN AN EXPLOSIVE ENVIRONMENT. DO NOT USE TO PUMP FLAMMABLE/COMBUSTIBLE FLUIDS, GASOLINE, KEROSENE, FUEL, OIL, ETC.

Piston Type Pressure Relief/Regulating Valves

Bypasses excess fluid. Adjustable to maintain control of line pressure at any pressure within the valve operating range. Selected pressure setting firmly held in place by locknut. Extra large passages to handle large flows.

- Polypropylene with stainless steel spring
- Excellent chemical resistance
- EPDM O-Rings
- Fore pressure to 150 p.s.i.
- 1/4" port for pressure gauge
- Choice of 1/2" or 3/4" NPT (M) inlet & (F) outlet connections



23120

Fimco #	Mfg. Part #	Description
5143199	23120-3/4-PP	Pressure Relief Valve (3/4" NPT)
5143200	23120-1/2-PP	Pressure Relief Valve (1/2" NPT)
5168717	PK-AB23120-KIT	Repair Kit, Items Marked **

Ref. #	Fimco #	Mfg. Part #	Description
1	CP23121-PP	CP23121-PP	Poly Body (3/4" NPT)
2	CP23128-PP	CP23128-PP	Poly Body (1/2" NPT)
3	5102022	F14	Pipe Plug, 1/4" MNPT
4	**	CP23126-302SS	Retaining Pin
5	◆◆	CP23125-PP	Guide Seat
6	**	CP23127-302SS	Spring
7	**	CP7717-15-EPR	O-Ring, EPDM Rubber
8	◆◆	CP23124-PP	Spring Retainer
9	5110266	CP23123-PP	Lock Ring
10	5046270	CP23122-NY	Adjusting Cap, Nylon (Gray)

** Available only in Repair Kit

◆◆: Only Available in Complete Assembly

Warranty Info

LIMITED WARRANTY FOR NEW FIMCO, IND. EQUIPMENT

WHO MAY USE THIS LIMITED WARRANTY. This limited warranty (the "Limited Warranty") is provided by Fimco, Ind. to the original purchaser ("you") of the Equipment (as defined below) from Fimco, Ind. or one of Fimco, Ind.'s authorized dealers. This Limited Warranty does not apply to any subsequent owner or other transferee of the Equipment. THIS LIMITED WARRANTY GIVES YOU SPECIFIC LEGAL RIGHTS, AND YOU MAY ALSO HAVE OTHER RIGHTS WHICH VARY FROM STATE TO STATE.

WHAT THIS LIMITED WARRANTY COVERS AND FOR HOW LONG. Fimco, Ind. warrants that any new Equipment will be free from defects in material and workmanship for a period of **one (1) year** (homeowner), **90 days** (commercial user), after delivery of the Equipment to you (the "Warranty Period"). The Warranty Period is not extended if Fimco, Ind. repairs or replaces the Equipment.

WHAT IS NOT COVERED BY THIS LIMITED WARRANTY. This Limited Warranty does not apply to: (1) used Equipment; (2) any Equipment that has been altered, changed, repaired or treated since its delivery to you, other than by Fimco, Ind. or its authorized dealers; (3) damage or depreciation due to normal wear and tear; (4) defects or damage due to failure to follow Fimco, Ind.'s operator's manual, specifications or other written instructions, or improper storage, operation, maintenance, application or installation of parts; (5) defects or damage due to misuse, accident or neglect, "acts of God" or other events beyond Fimco, Ind.'s reasonable control; (6) accessories, attachments, tools or parts that were not manufactured by Fimco, Ind., whether or not sold or operated with the Equipment; or (7) rubber parts, such as tires, hoses and grommets.

HOW TO OBTAIN WARRANTY SERVICE. To obtain warranty service under this Limited Warranty, you must (1) provide written notice to Fimco, Ind. of the defect during the Warranty Period and within **thirty (30)** days after the defect becomes apparent or the repair becomes necessary, at the following address: Fimco, Ind., 1000 Fimco Lane, North Sioux City, SD 57049; and (2) make the Equipment available to Fimco, Ind. or an authorized dealer within a reasonable period of time. For more information about this Limited Warranty, please call: **800-831-0027**.

WHAT REMEDIES ARE AVAILABLE UNDER THIS LIMITED WARRANTY. If the conditions set forth above are fulfilled and the Equipment or any part thereof is found to be defective, Fimco, Ind. shall, at its own cost, and at its option, either repair or replace the defective Equipment or part. Fimco, Ind. will pay for shipping and handling fees to return the repaired or replacement Equipment or part to you.

LIMITATION OF IMPLIED WARRANTIES AND OTHER REMEDIES. THE REMEDIES DESCRIBED ABOVE ARE YOUR SOLE AND EXCLUSIVE REMEDIES, AND FIMCO, IND.'S SOLE LIABILITY, FOR ANY BREACH OF THIS LIMITED WARRANTY. TO THE EXTENT APPLICABLE, ANY IMPLIED WARRANTIES, INCLUDING, WITHOUT LIMITATION, THE IMPLIED WARRANTIES OF MERCHANTABILITY AND FITNESS FOR A PARTICULAR PURPOSE, SHALL BE LIMITED IN DURATION TO THE WARRANTY PERIOD, AND THE REMEDIES AVAILABLE FOR BREACH THEREOF SHALL BE LIMITED TO THE REMEDIES AVAILABLE UNDER THIS EXPRESS LIMITED WARRANTY. SOME STATES DO NOT ALLOW LIMITATIONS ON HOW LONG AN IMPLIED WARRANTY LASTS, SO THE ABOVE LIMITATION MAY NOT APPLY TO YOU. IN NO EVENT SHALL FIMCO, IND.'S LIABILITY UNDER THIS LIMITED WARRANTY EXCEED THE ACTUAL AMOUNT PAID BY YOU FOR THE DEFECTIVE EQUIPMENT, NOR SHALL FIMCO, IND. BE LIABLE, UNDER ANY CIRCUMSTANCES, FOR ANY CONSEQUENTIAL, INCIDENTAL, SPECIAL OR PUNITIVE DAMAGES OR LOSSES, WHETHER DIRECT OR INDIRECT. SOME STATES DO NOT ALLOW THE EXCLUSION OR LIMITATION OF INCIDENTAL OR CONSEQUENTIAL DAMAGES, SO THE ABOVE LIMITATION OR EXCLUSION MAY NOT APPLY TO YOU.